

# Cumulative impacts

## Data to use in a cumulative impacts analysis - DRAFT

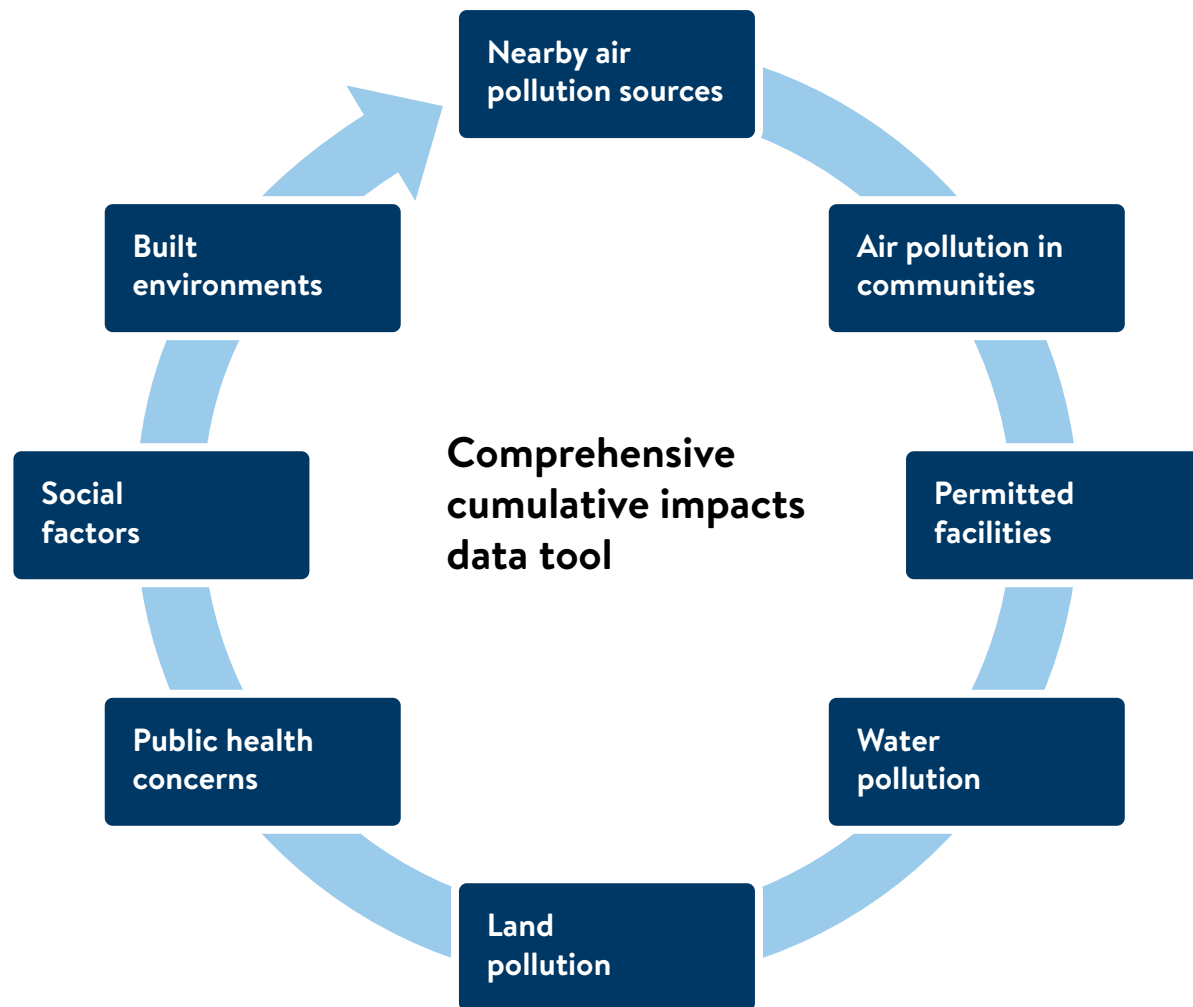
---

### What data matters most to you?

Please take a few minutes to review the list of topics and subtopics on the back of this page that we think can be reflected in data, then discuss them further with your group. As you review, please consider:

- What needs clarification?
- Which topics and subtopics do you think are most important for being included in a data tool?
- What is missing? What do we need more of?

Getting your feedback will help us to create a data tool for future cumulative impact analysis.



Disclaimer: This document is a working document. This document may change over time as a result of new information, further deliberation, or other factors not yet known to the Agency.

## Nearby air pollution sources

- Industrial or industry specific amounts of pollution at facilities
- Higher concentrations of industry (number of facilities nearby)
- Traffic: overall traffic
- Traffic: Heavy-duty vehicle traffic
- Traffic: major roadways
- Non-permitted pollution
- Other sources

## Air pollution in communities

- Air pollution monitoring data
- Air pollution cancer risk (Minnesota MNRISK data)
- Air Quality Index (AQI)
- Greenhouse gas emissions

## Permitted facilities

- Type of permitted sources nearby (e.g., power plant, landfill, metal processing, etc.)
- Number of permitted sources nearby
- Amount of allowable/potential emissions
- Amount of actual emissions
- Past compliance and enforcement issues at facilities

## Water pollution

- Nearby impaired waters
- Groundwater threats
- Agricultural runoff
- Industrial runoff
- Drinking water from private wells
- Other water pollution sources

## Land pollution

- Brownfield sites
- Clean-up sites for Minnesota Pollution Control
- Disposal sites for Solid Waste
- Foundries
- Hazardous waste sites
- Landfills
- Scrap metal facilities
- Solid waste incinerators
- Superfund sites
- Transfer/processing stations (for solid waste)
- Other land-based pollution sources

## Public health concerns

- Cancer risk (Minnesota MNRisks score)
- Health insurance coverage (ACS by tract)
- Health worker shortage areas/medically underserved areas
- Heart conditions (e.g., heart attack hospitalizations)
- Heat stroke emergency department visits
- Infant and child health (e.g., low-birth weight births, lead poisoning)
- Lung conditions (e.g., asthma ED visits, COPD)
- Other health conditions

## Social factors

- Age
- Cost-burdened households
- Educational attainment
- Food insecurity
- Income
- Limited English-speaking households
- Outdoor workers & exposure to extreme heat
- Racial inequality
- Rental households
- Unemployment
- Other social factors

## Built environment

- Airports
- Built surfaces (impervious surfaces like roads, concrete, buildings, etc.)
- Highways
- Industrial land use
- Medical facilities
- Older houses
- Parks and recreational space
- Railways
- Shipping ports
- Tree canopy
- Other built environment conditions